

Happy Hippo

Der Bauplan ist nur zum privaten nichtkommerziellen Gebrauch freigegeben.

Dieser Bauplan besteht aus 3 Teilen und ist damit etwas umfangreicher ausgefallen.

Teil 1 beinhaltet den Bauplan zum großen Hippo, in Teil 2 findest du Fotomaterial als Bauhilfe und in Teil 3 den Bauplan zum Babyhippo, samt Hilfebildern.

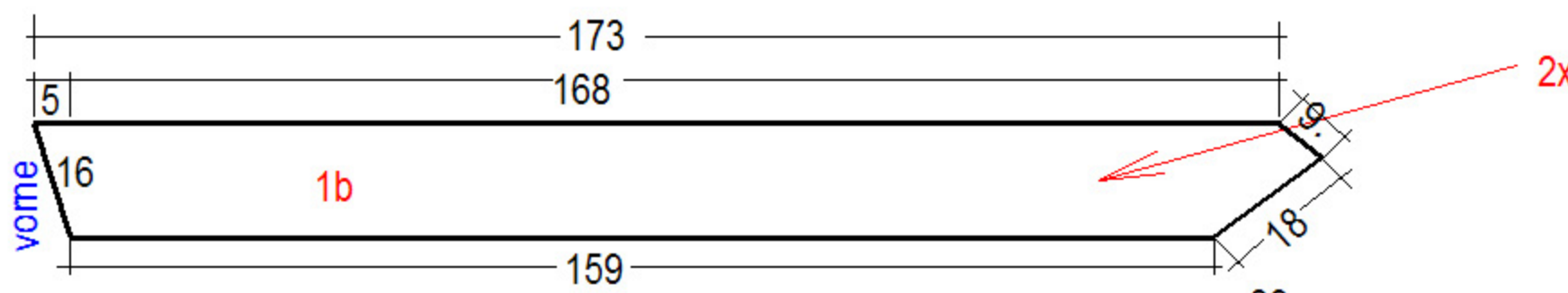


Alle Maße in diesem Bauplan sind ohne Nahtzugabe !

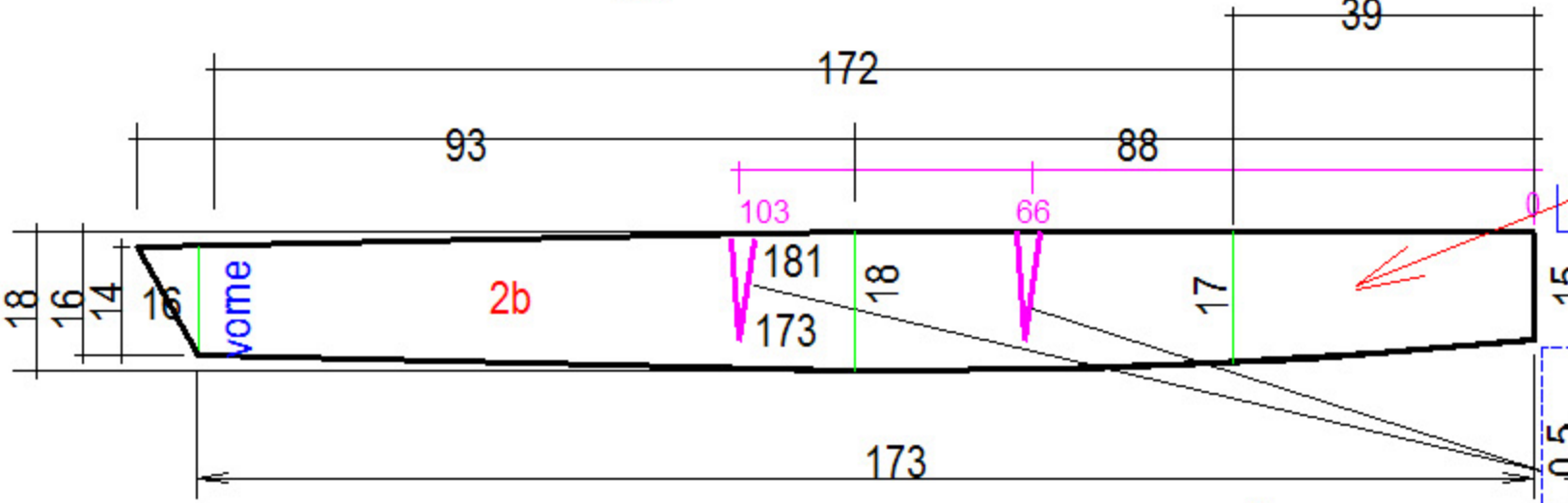
Alle Maße im Bauplan sind ohne Nahtzugabe,
diese muss bei erstellen der Schablonen zugegeben werden.



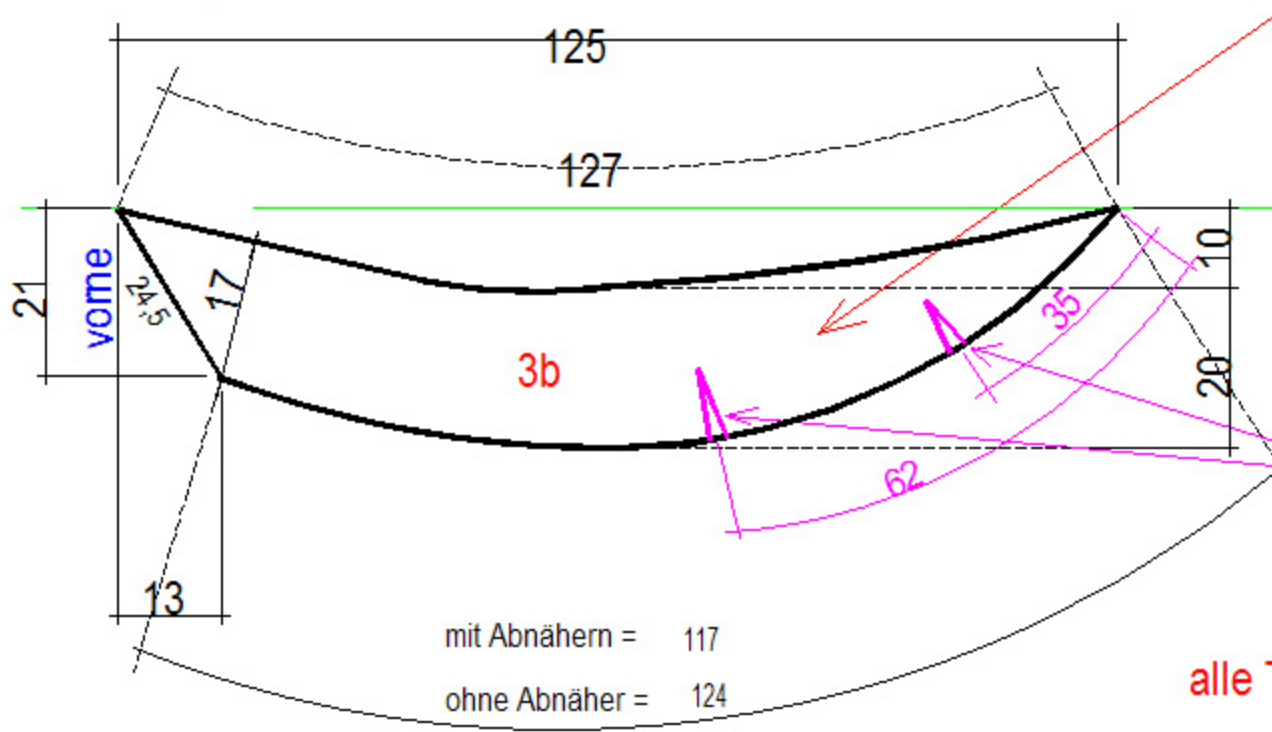
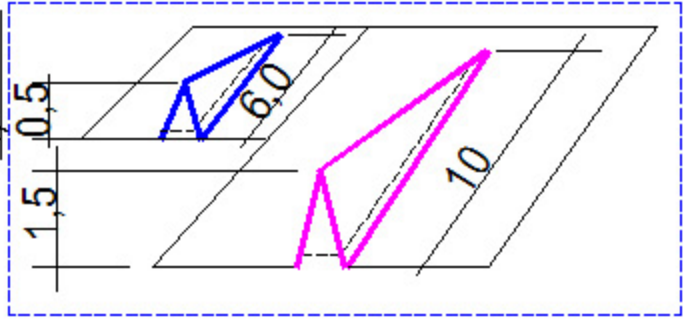




2x



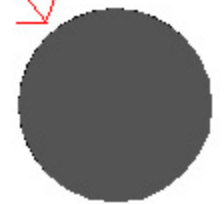
2x



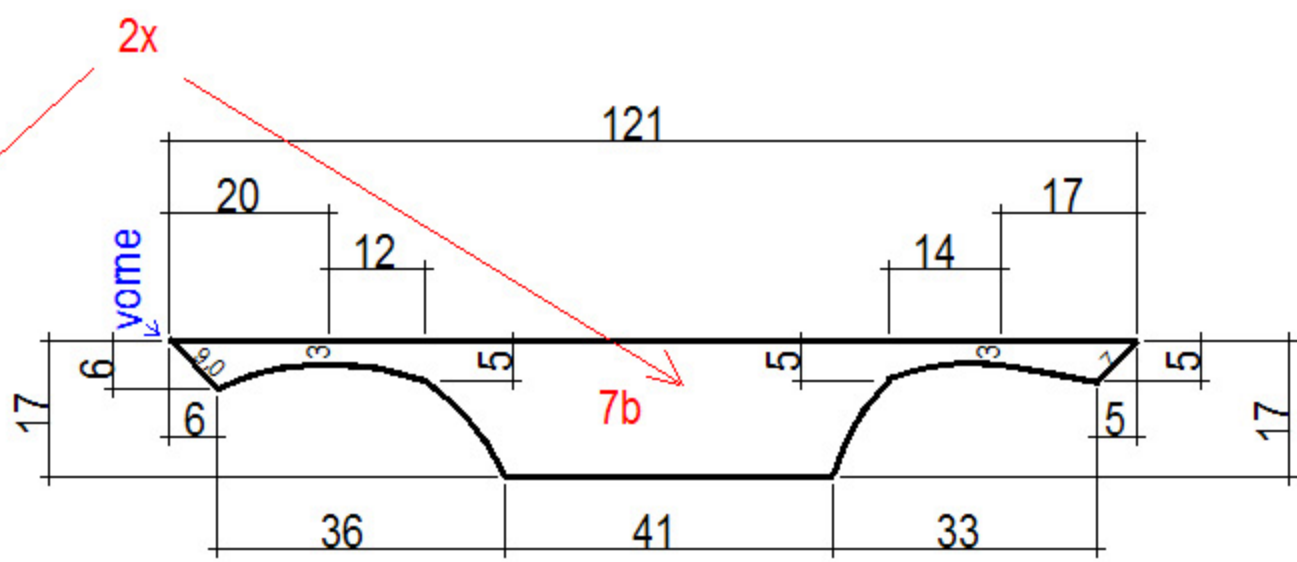
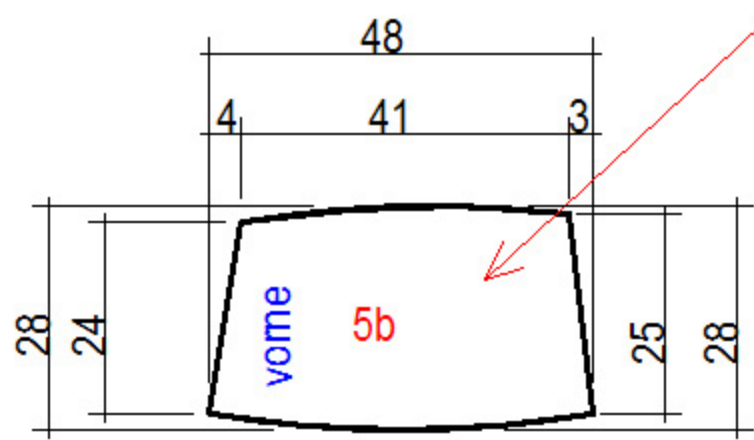
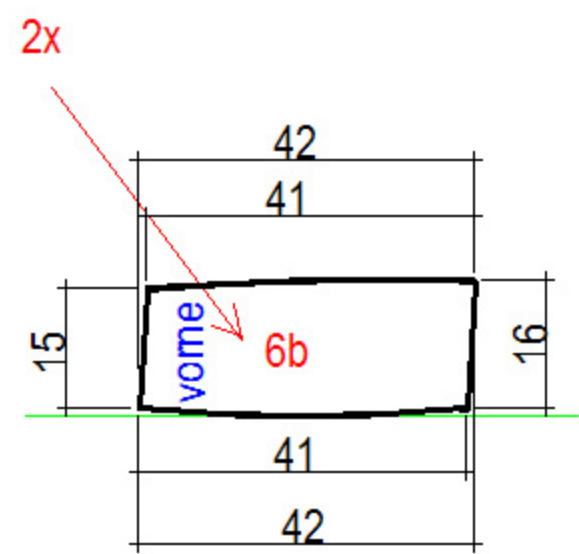
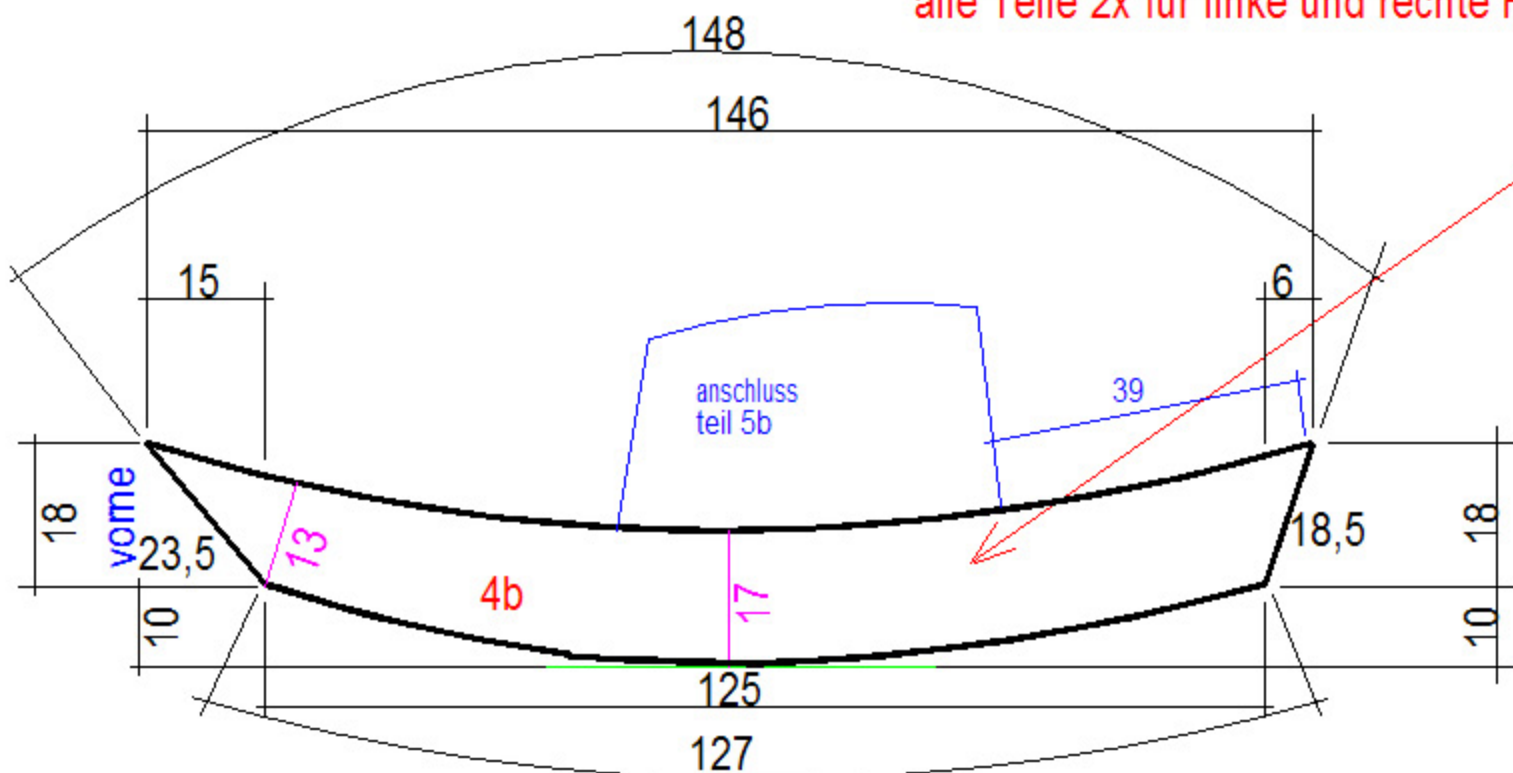
2x

mit Abnähern = 117
 ohne Abnäher = 124

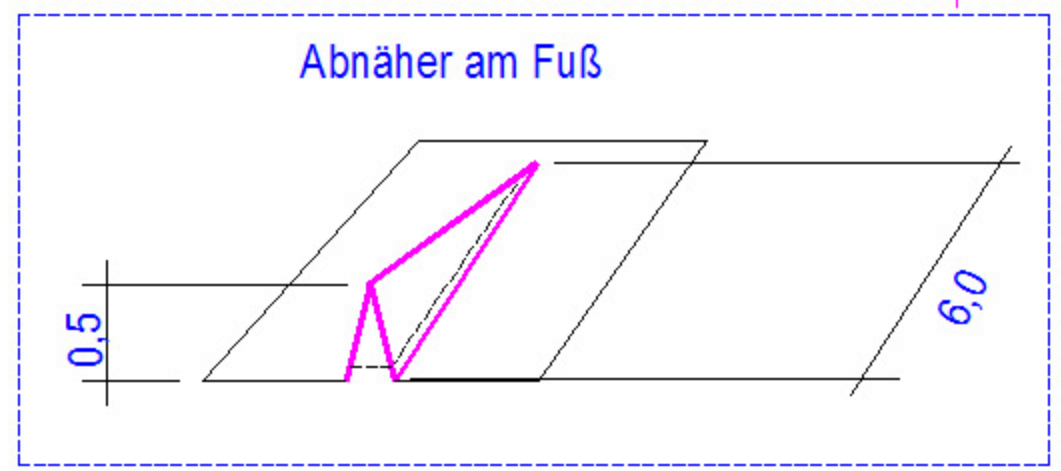
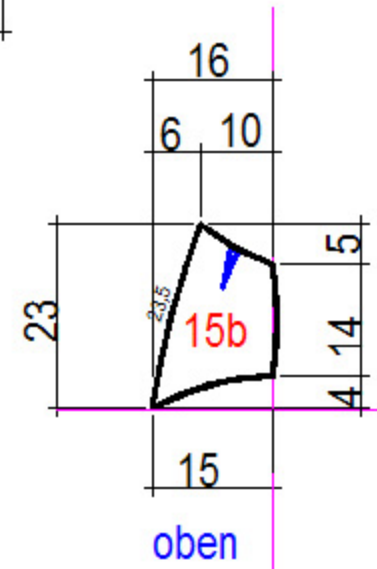
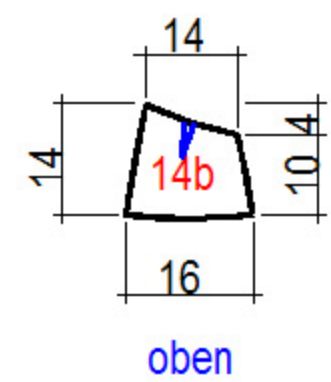
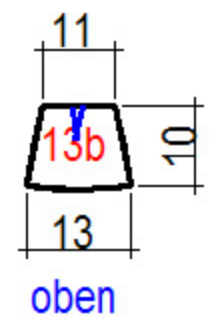
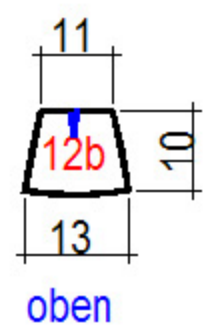
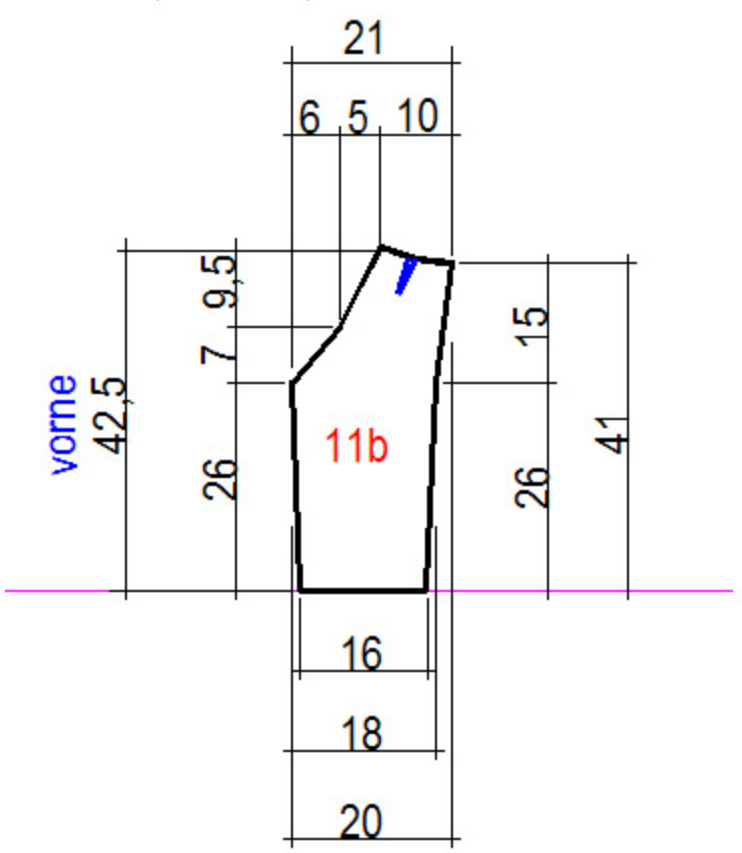
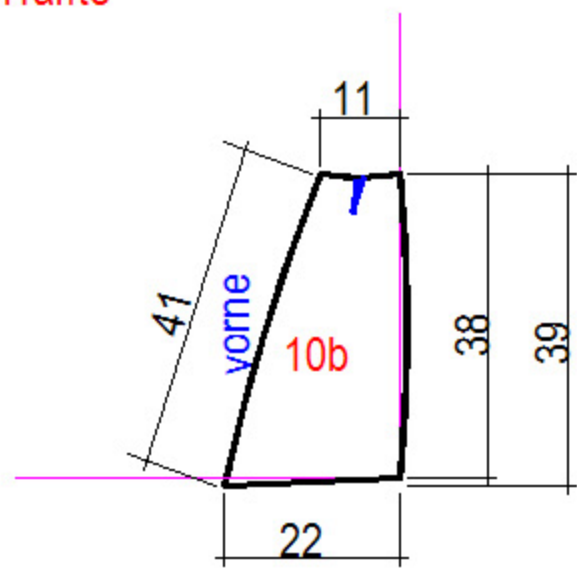
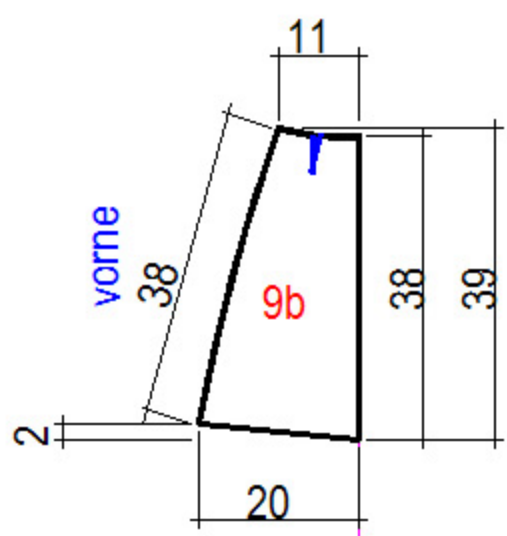
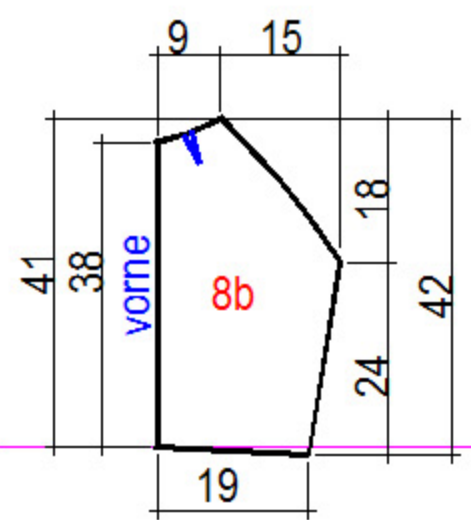
Durchmesser
 Fußsohle = 25.5

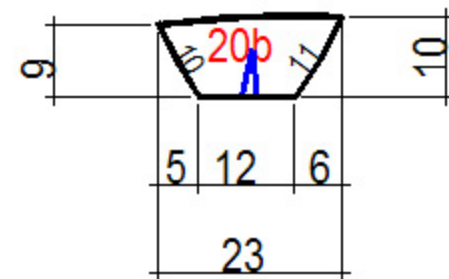
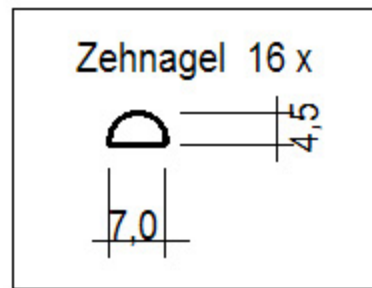
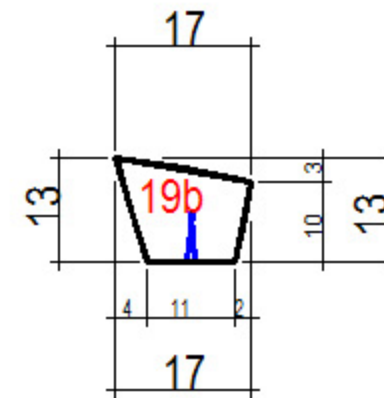
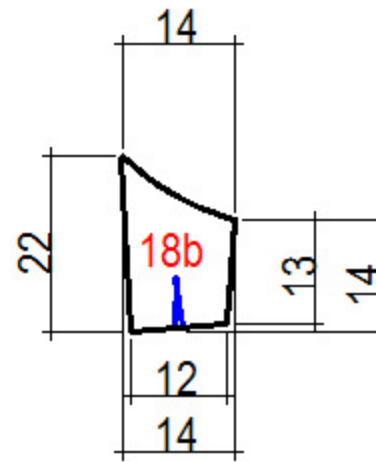
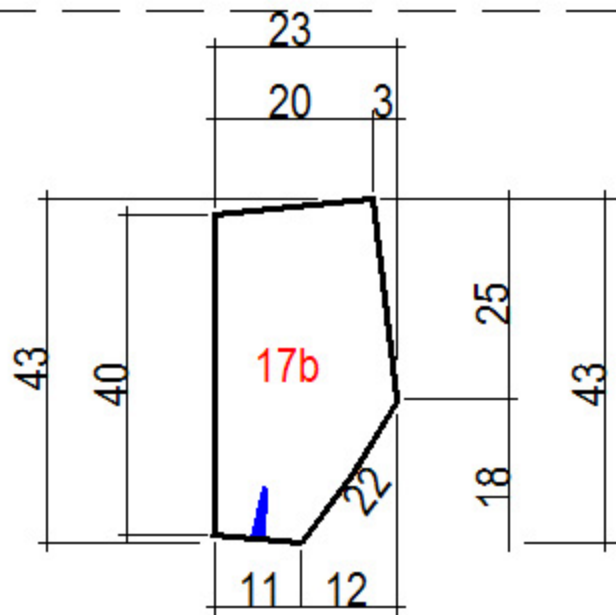
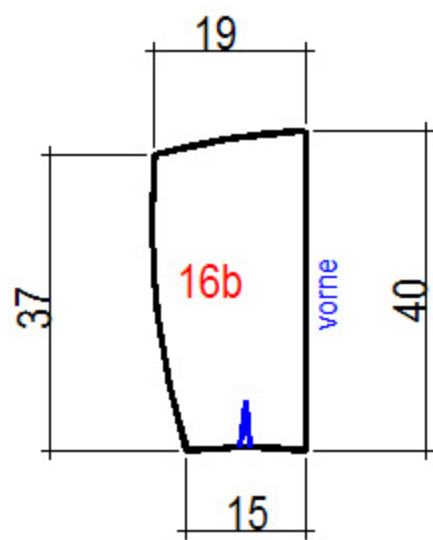


alle Teile 2x für linke und rechte Hälfte

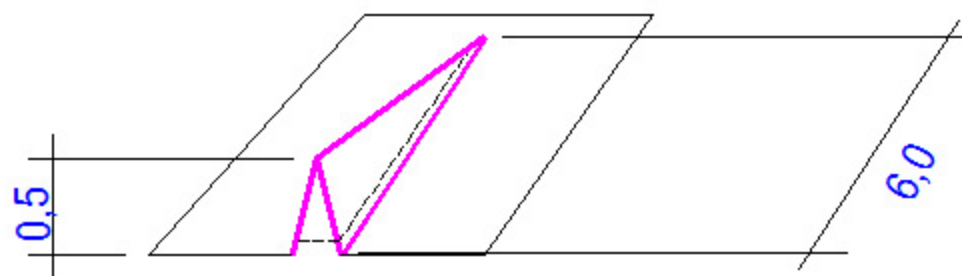


alle Teile 2x für linke und rechte Hälfte

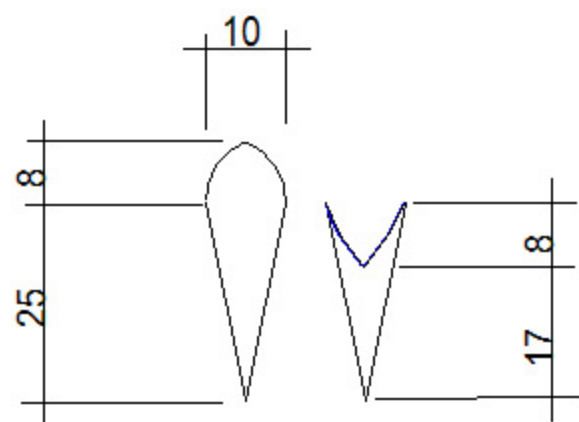




Abnäher am Fuß

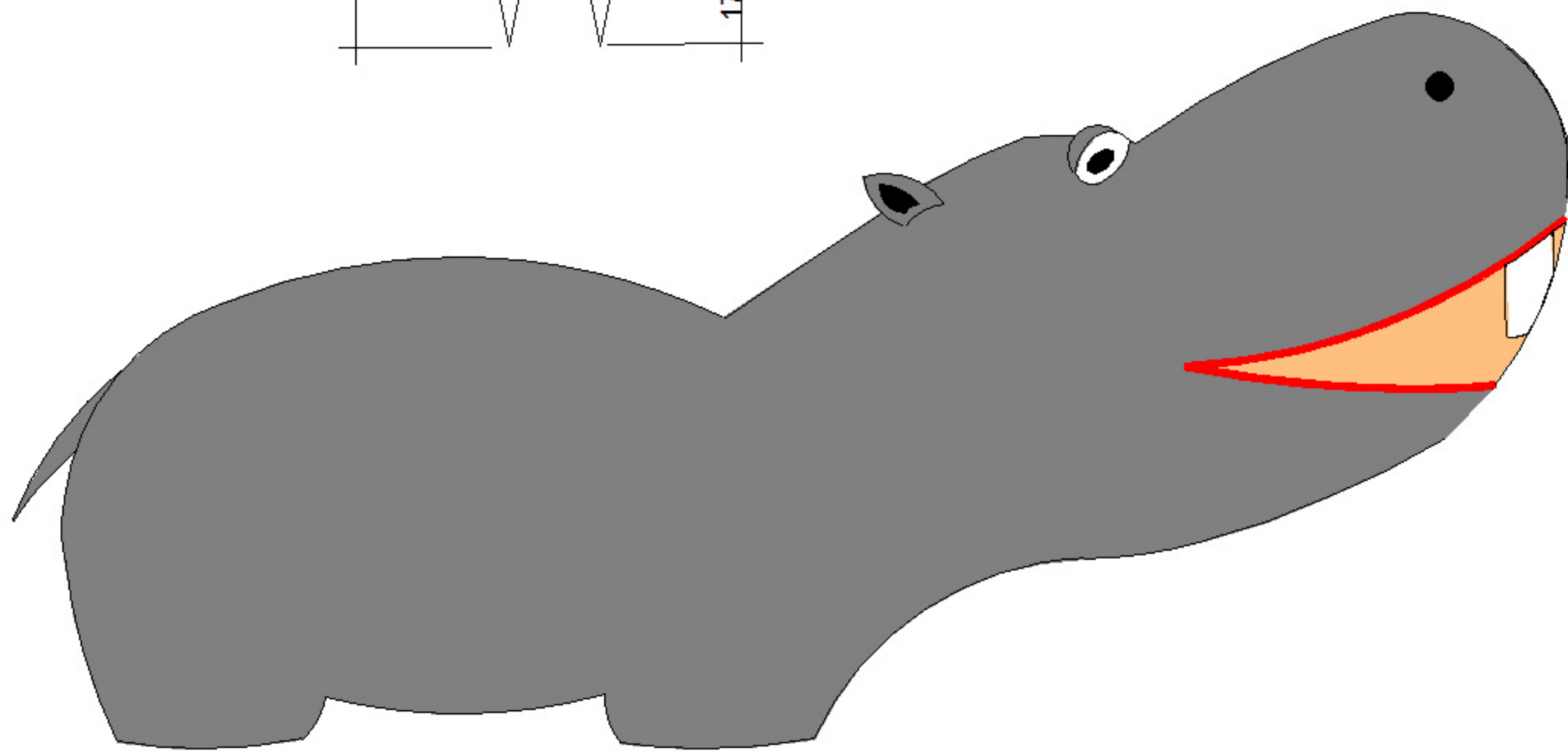


Schwanz

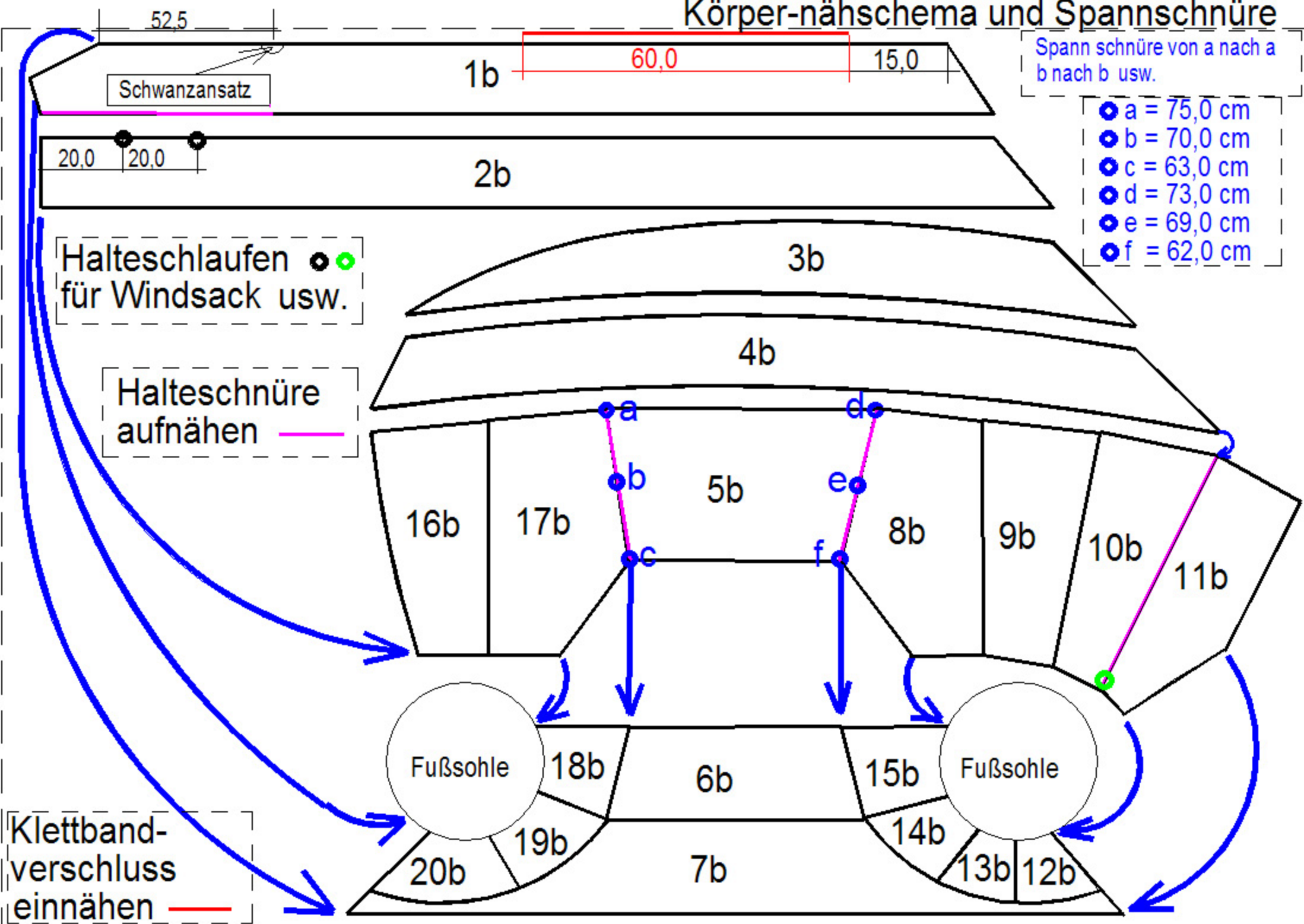


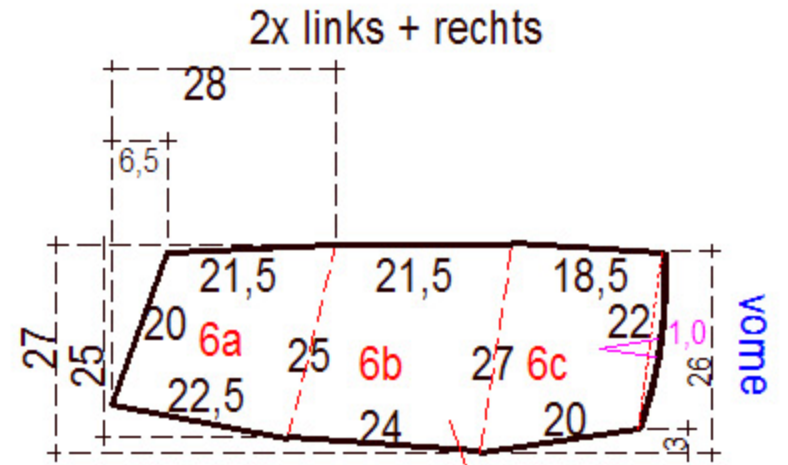
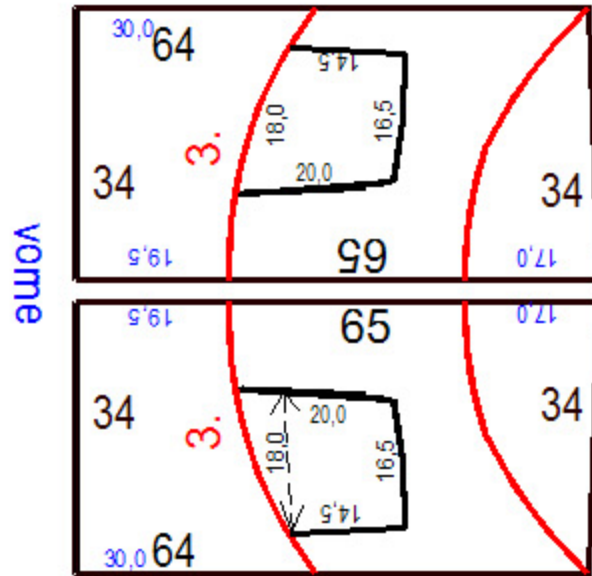
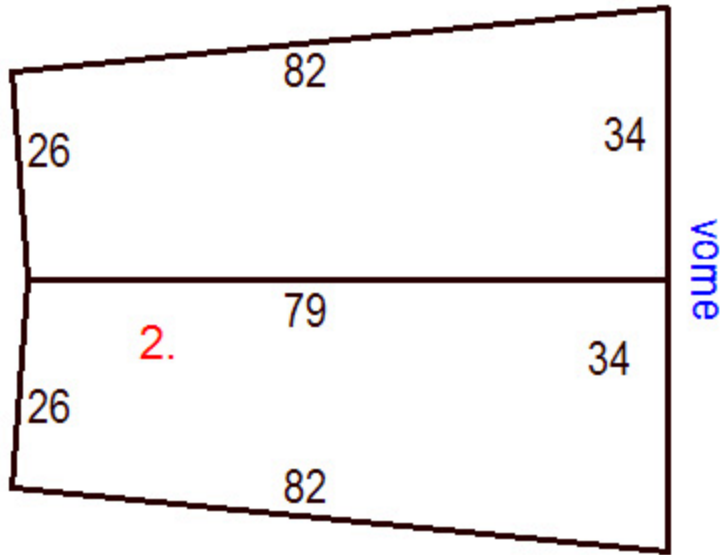
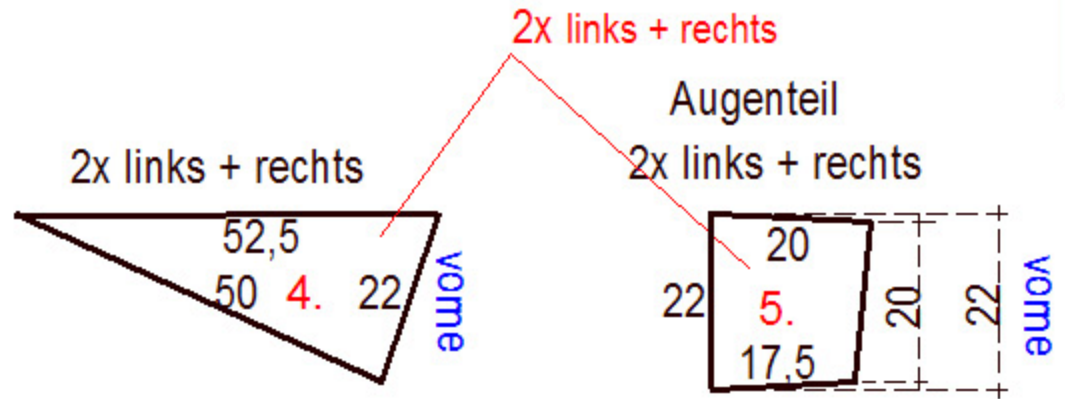
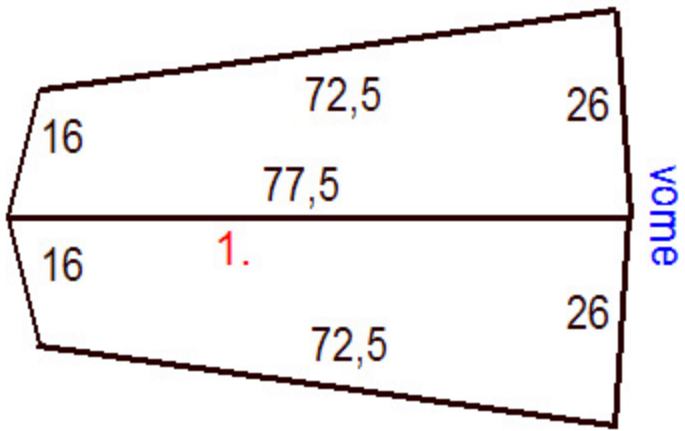
Nilpferd 1:5

250 cm lang
100 cm breit

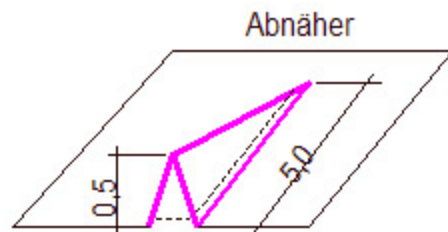


Körper-nähschema und Spannschnüre



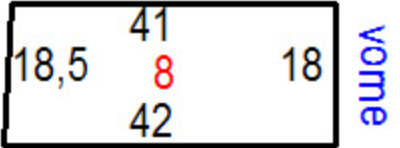


Hippo



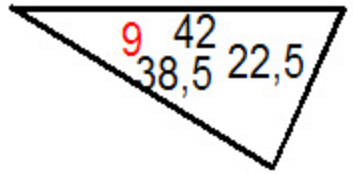
alle Teile 2x für linke und rechte Hälfte

2x links + rechts



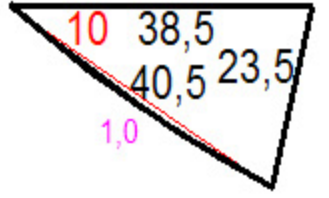
vorne

2x links + rechts



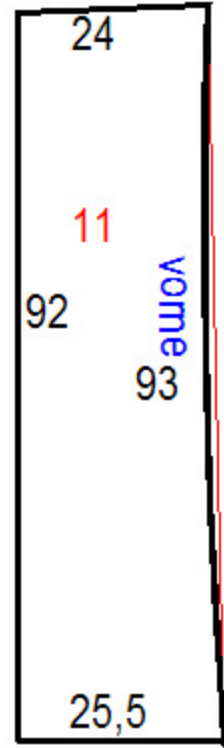
vorne

2x links + rechts

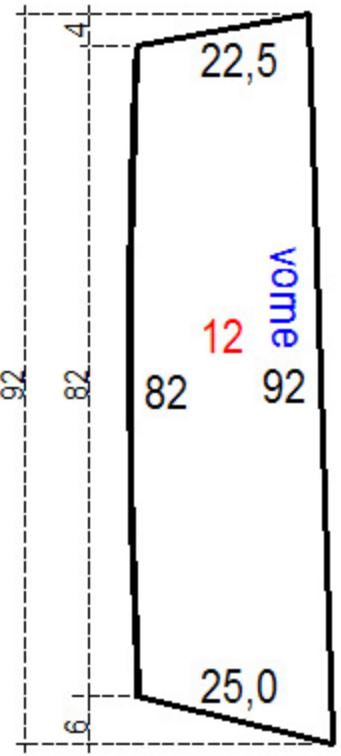


vorne

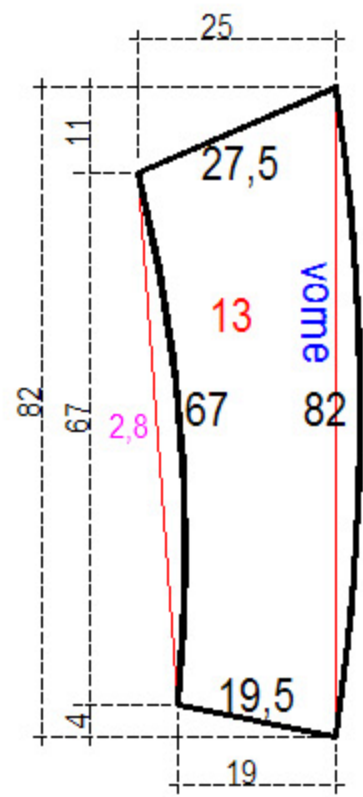
2x links + rechts



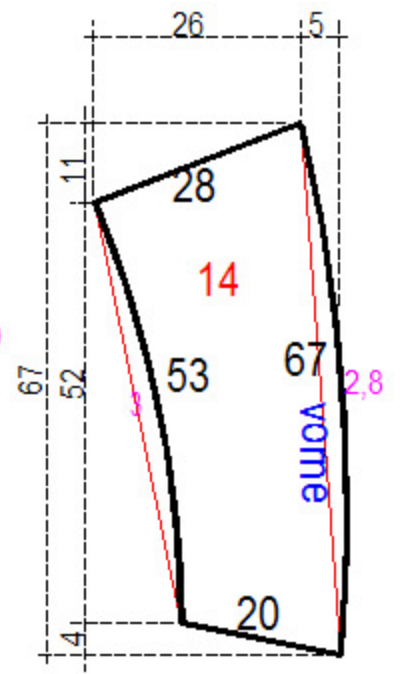
2x links + rechts



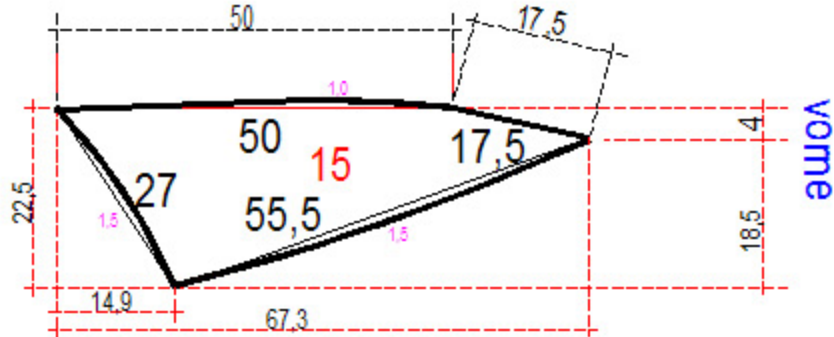
2x links + rechts



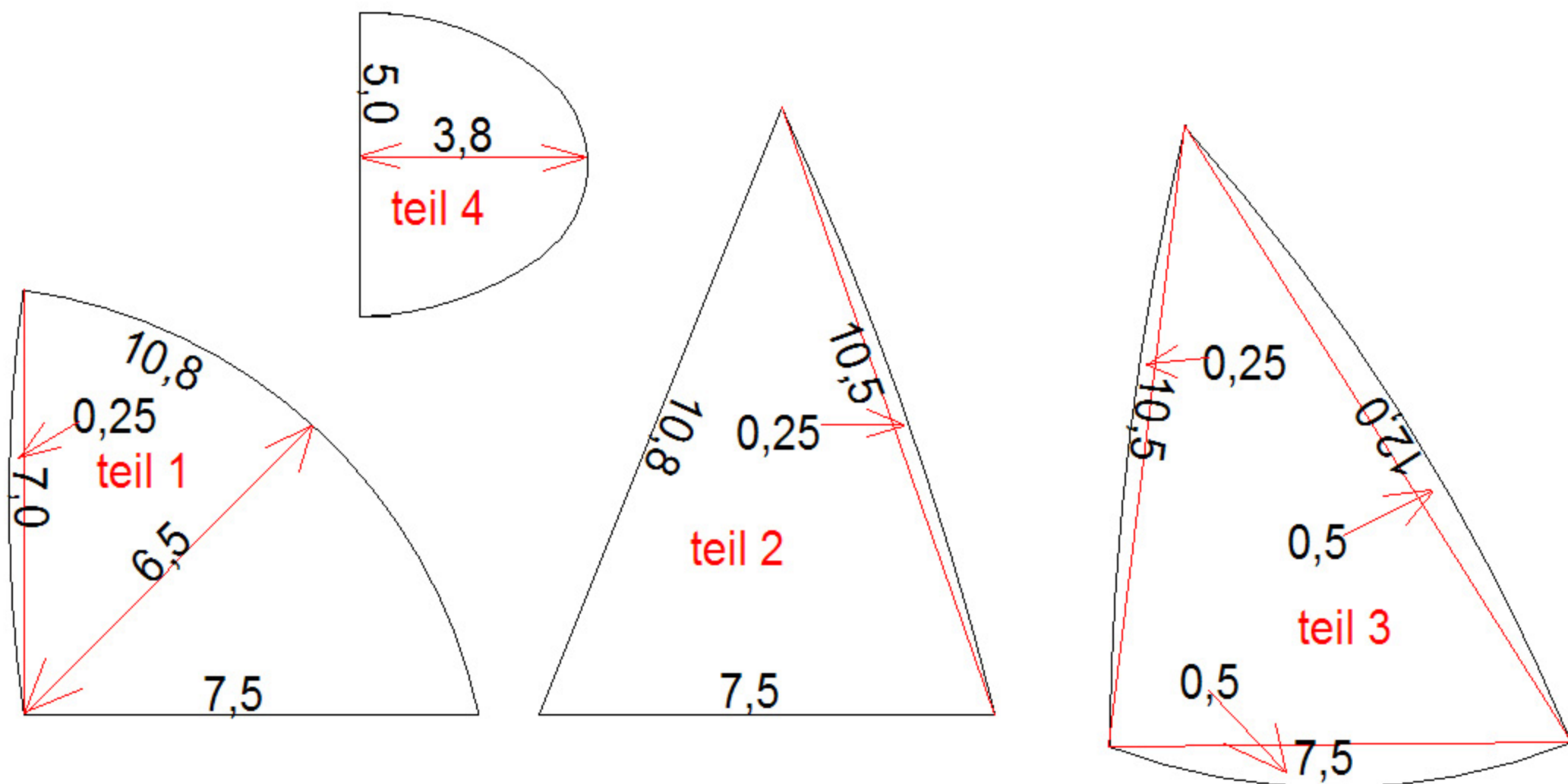
2x links + rechts



2x links + rechts



Hippo

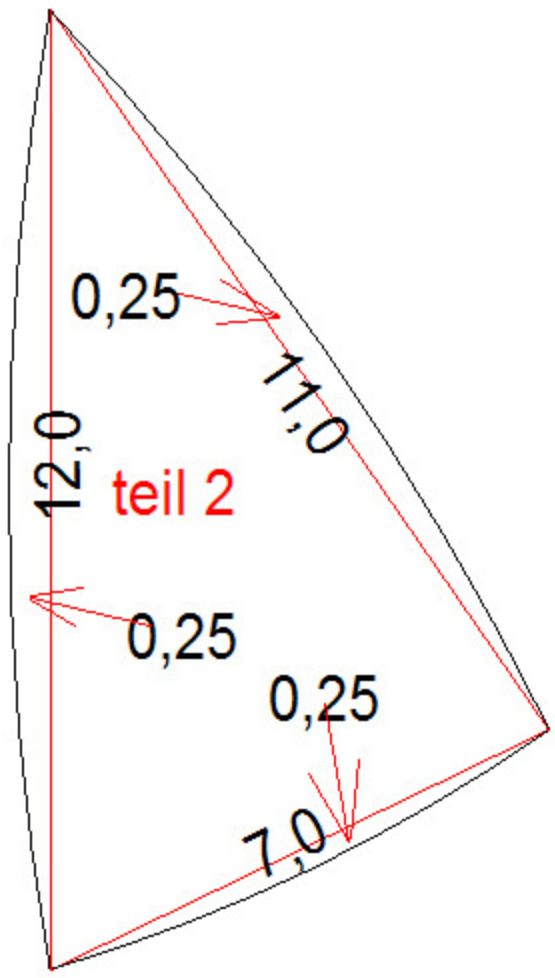
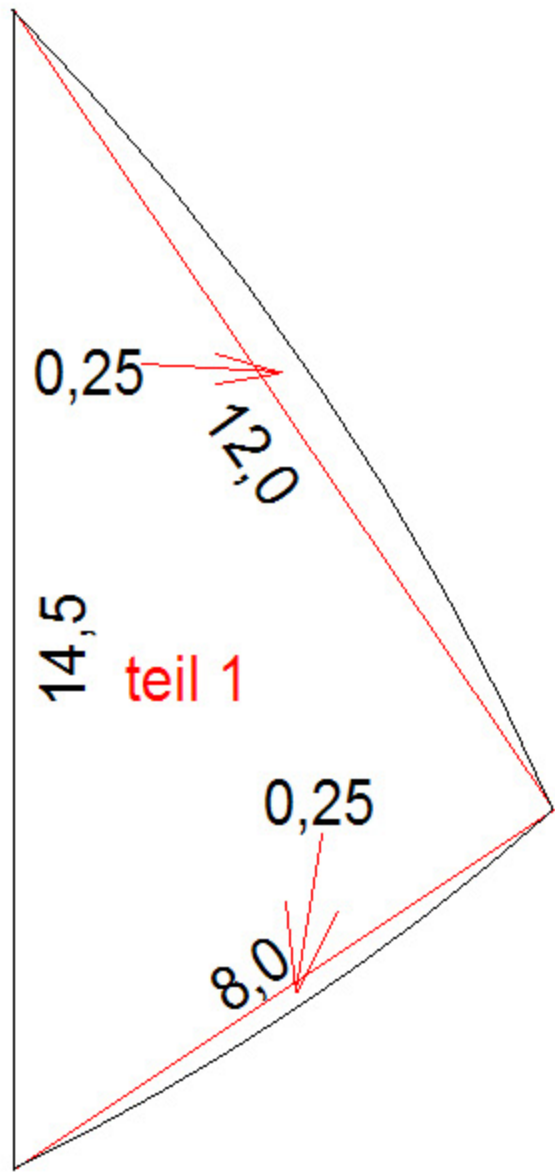


Hippo Nase 1 : 1

alle Teile 4 x 2 x für links und 2 x für rechts

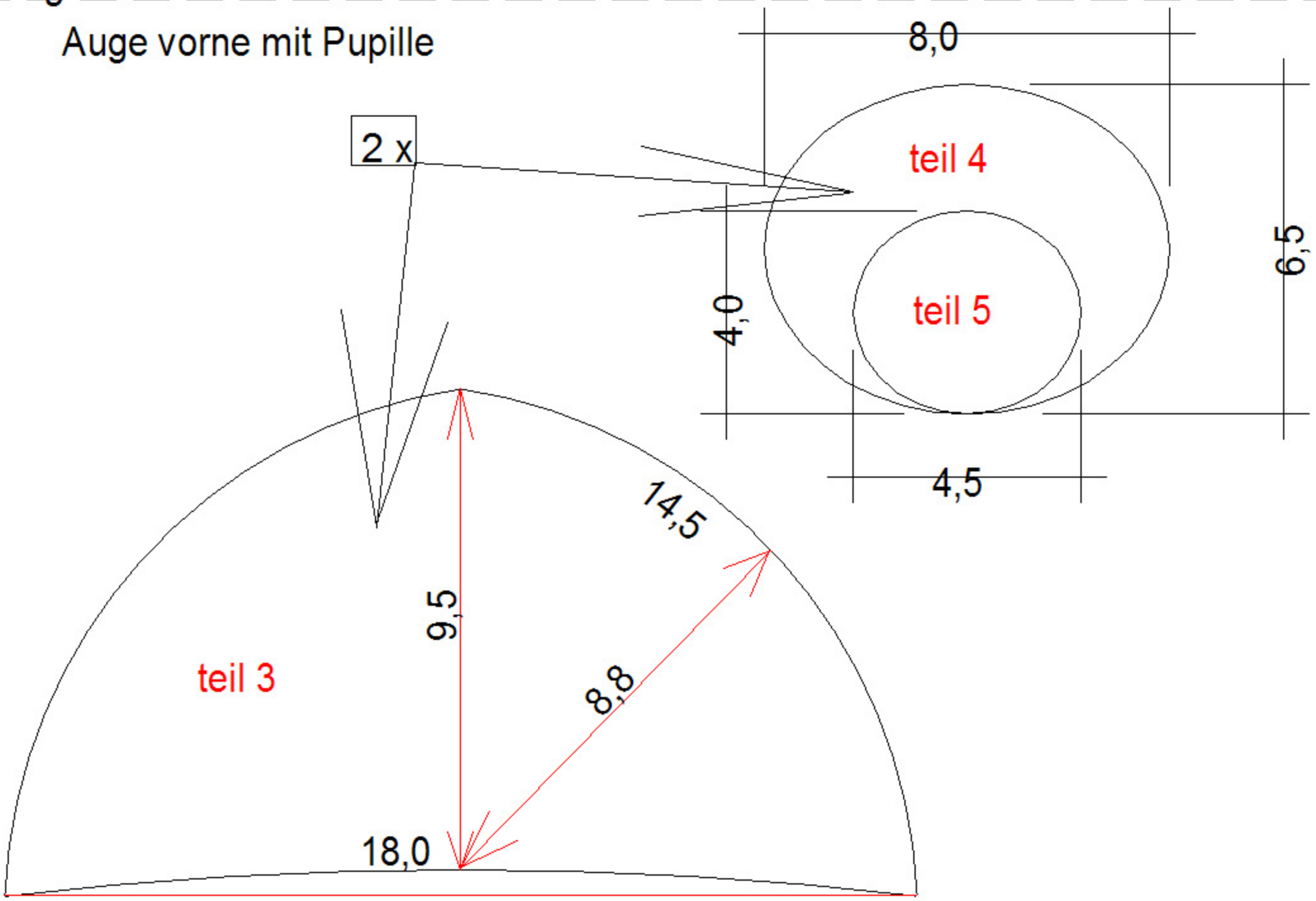
Auge seite 1

alle teile 4 x 2 x für links und 2 x für rechts

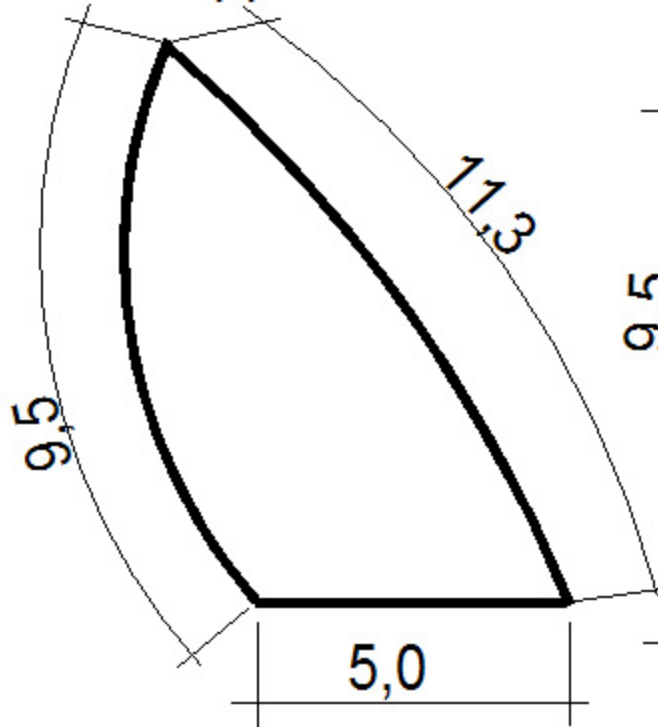


Auge seite 2

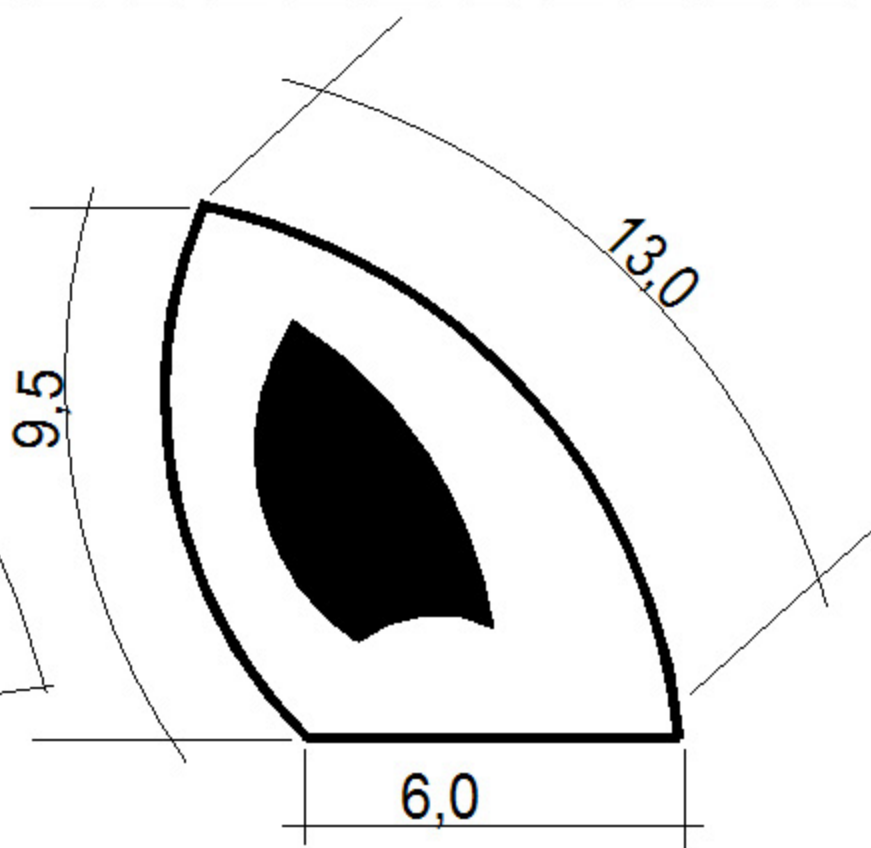
Auge vorne mit Pupille



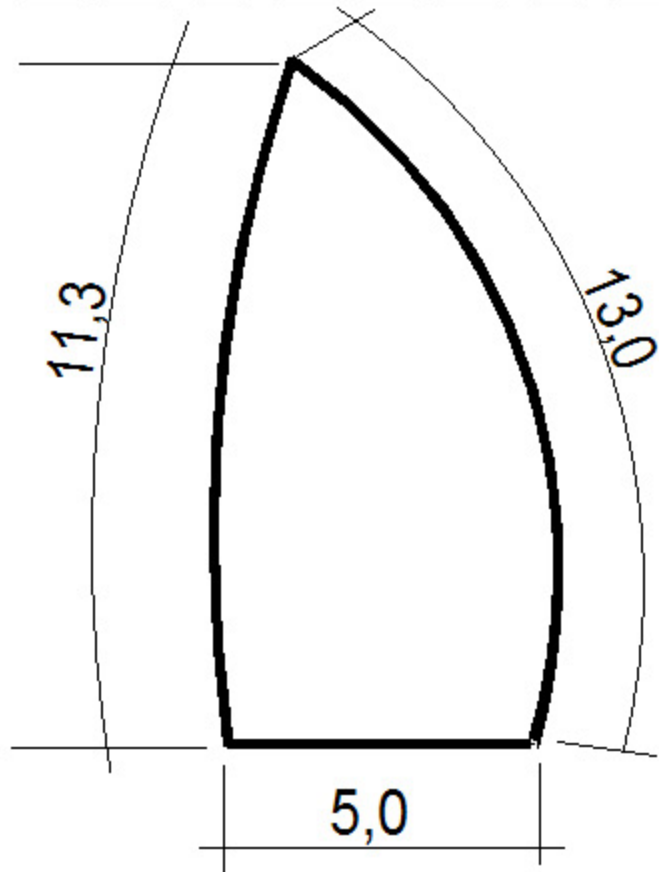
Hippo Ohr



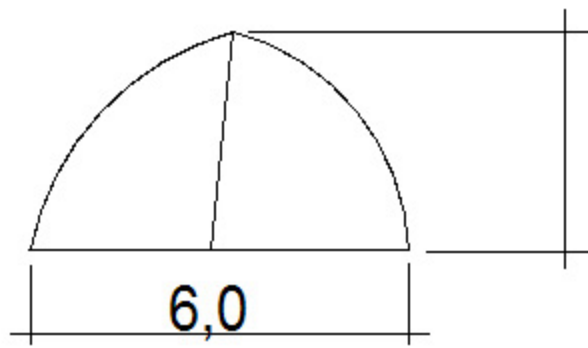
Ohr hinten links
von vorne gesehen



Ohr links von vorne

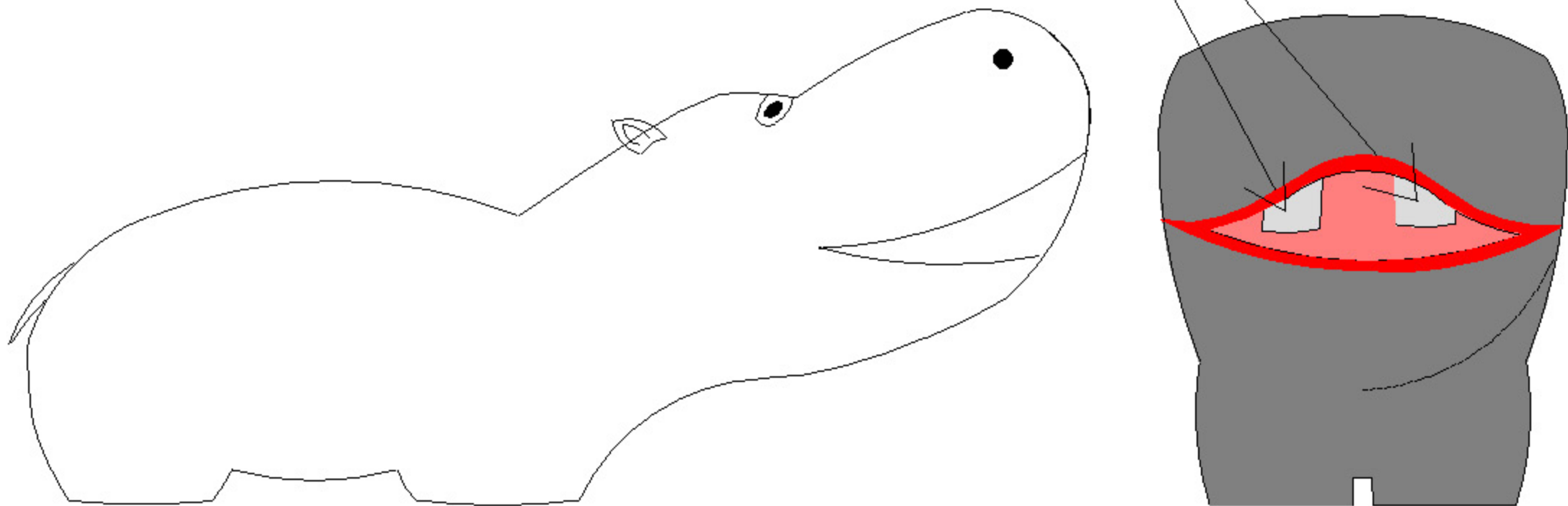


Ohr hinten rechts
von vorne gesehen



Draufsicht Ohr links

Lufteinlassöffnungen mit weiß hinternäht
als Ventil ausgearbeitet

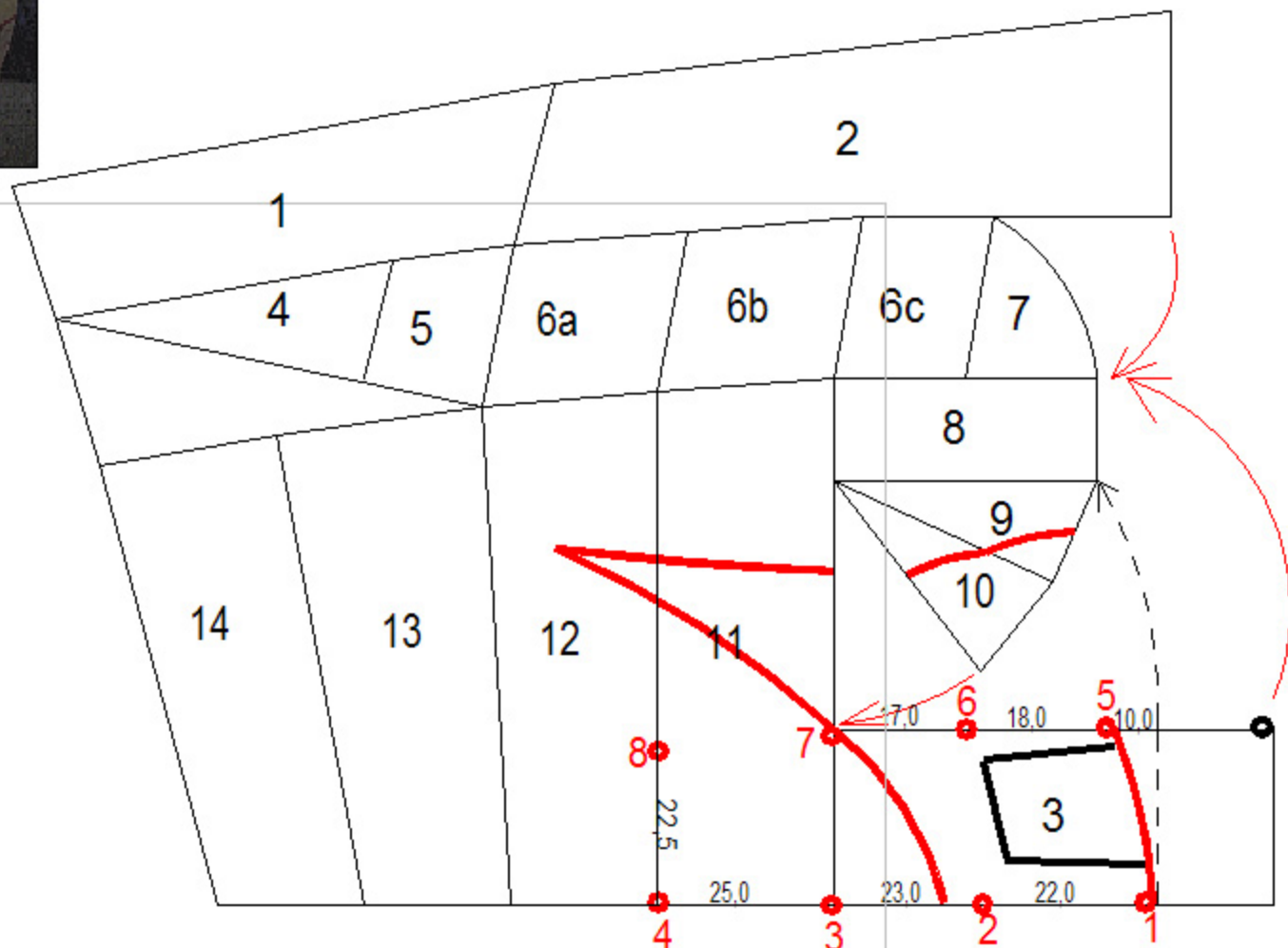


Waage Seite 1



Kopf Nähschema und Waagepunkte ●
Halteschnur zur Schnur des Lifters ●

- 1 = 245.0 cm
- 2 = 242.0 cm
- 3 = 248.5 cm
- 4 = 257.0 cm
- 5 = 243.5 cm
- 6 = 244.0 cm
- 7 = 255.5 cm
- 8 = 263.5 cm



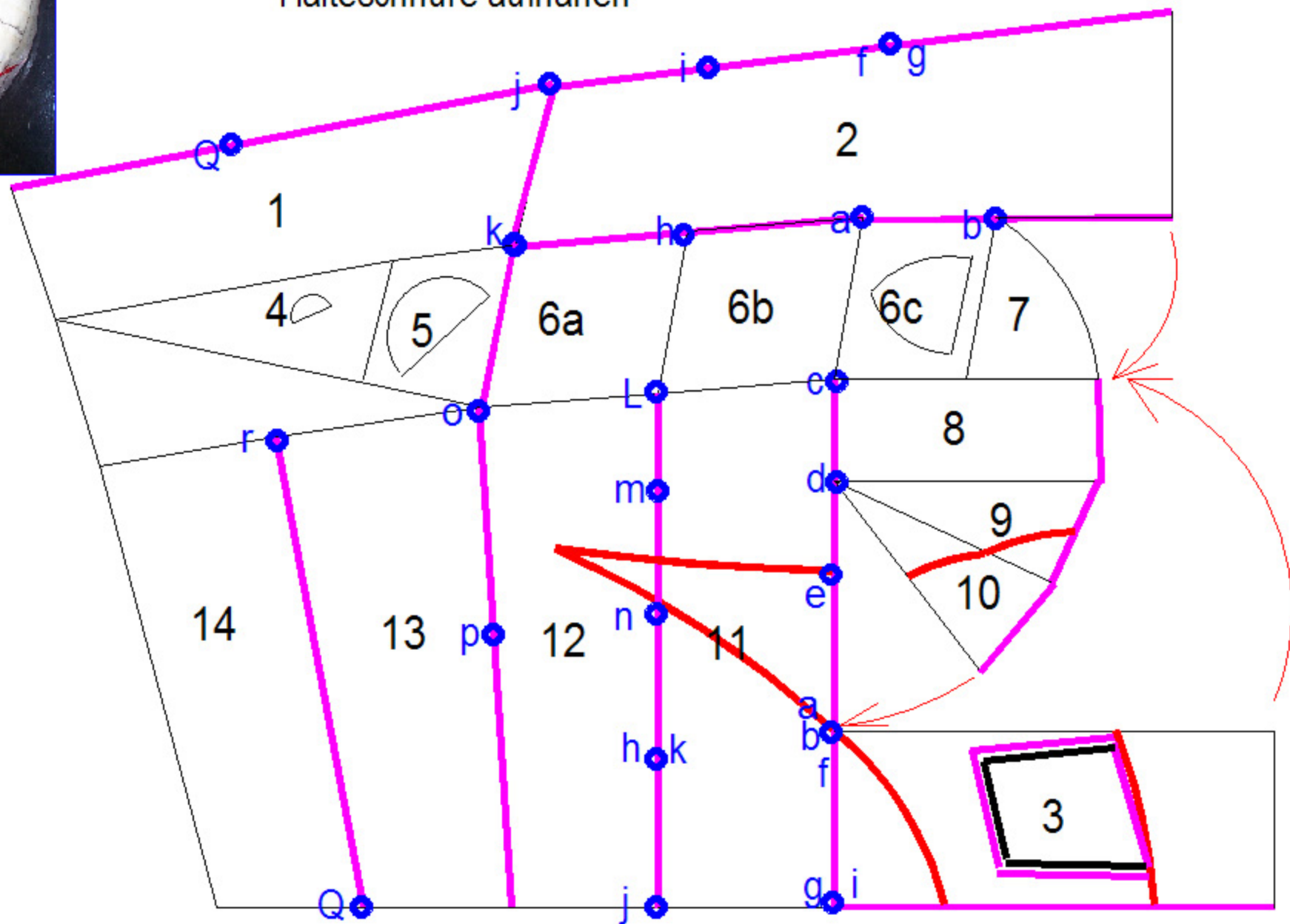


Kopf Spannschnüre

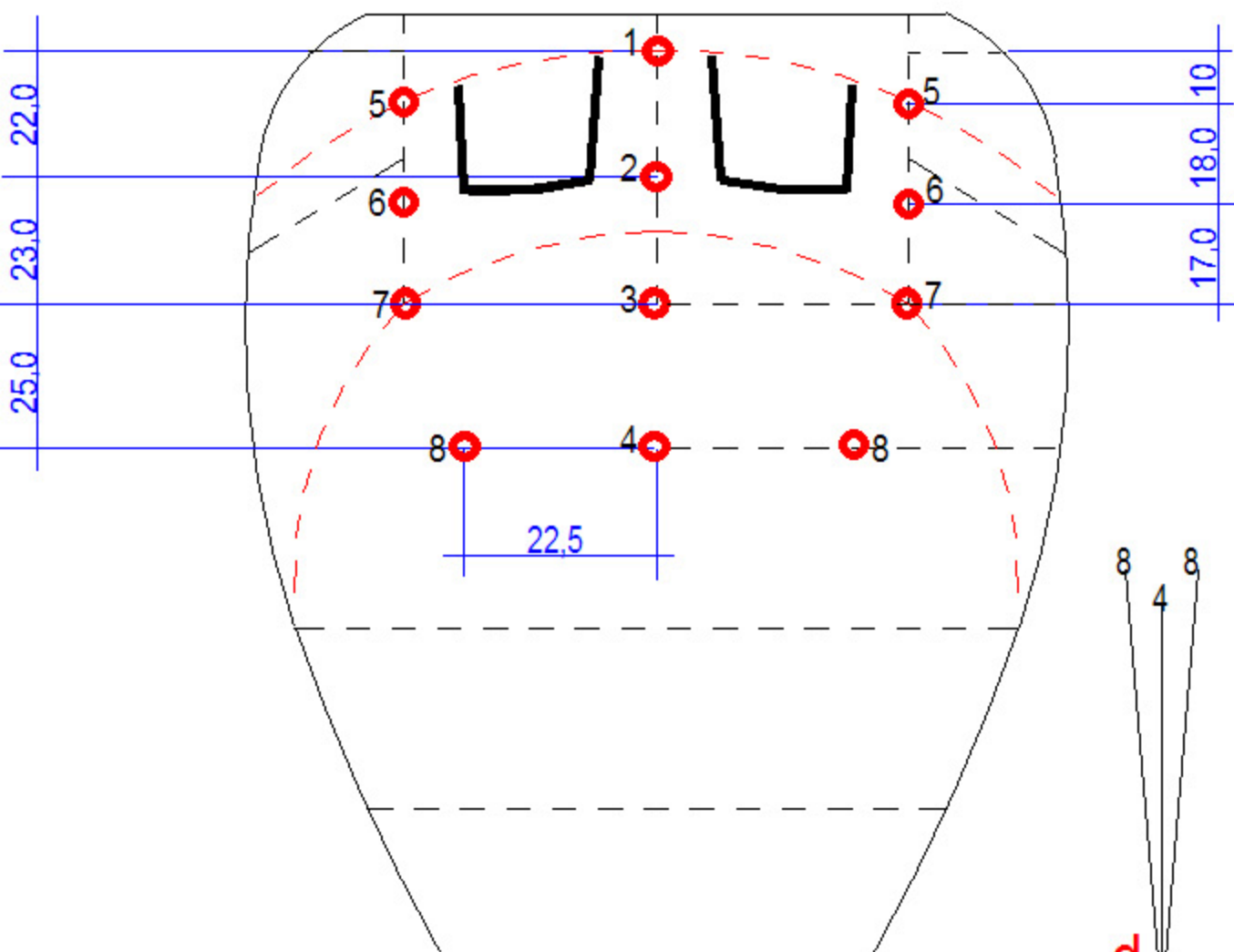
a nach a / b nach b usw. ●

Halteschnüre aufnähen —

- a = 64.0 cm 2x
- b = 64.5 cm 2x
- c = 98.0 cm 1x
- d = 100.0 cm 1x
- e = 95.0 cm 1x
- f = 72.0 cm 2x
- g = 70.5 cm 1x
- h = 68.0 cm 2x
- i = 70.0 cm 1x
- j = 67.5 cm 1x
- k = 62.5 cm 2x
- L = 94.0 cm 1x
- m = 98.0 cm 1x
- n = 91.0 cm 1x
- o = 82.0 cm 1x
- p = 83.0 cm 1x
- Q = 65.0 cm 1x
- r = 76.0 cm 1x

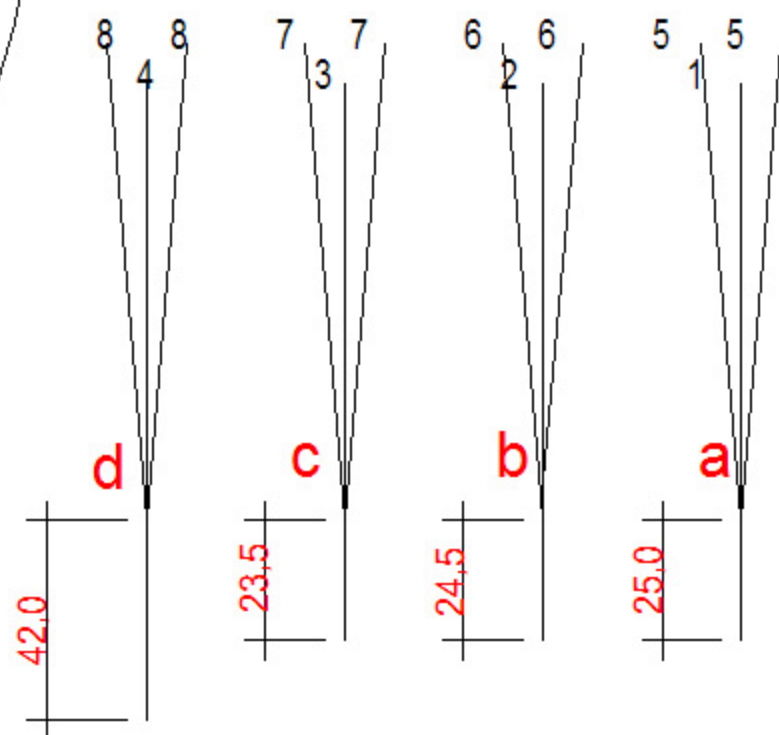


Waage seite 2

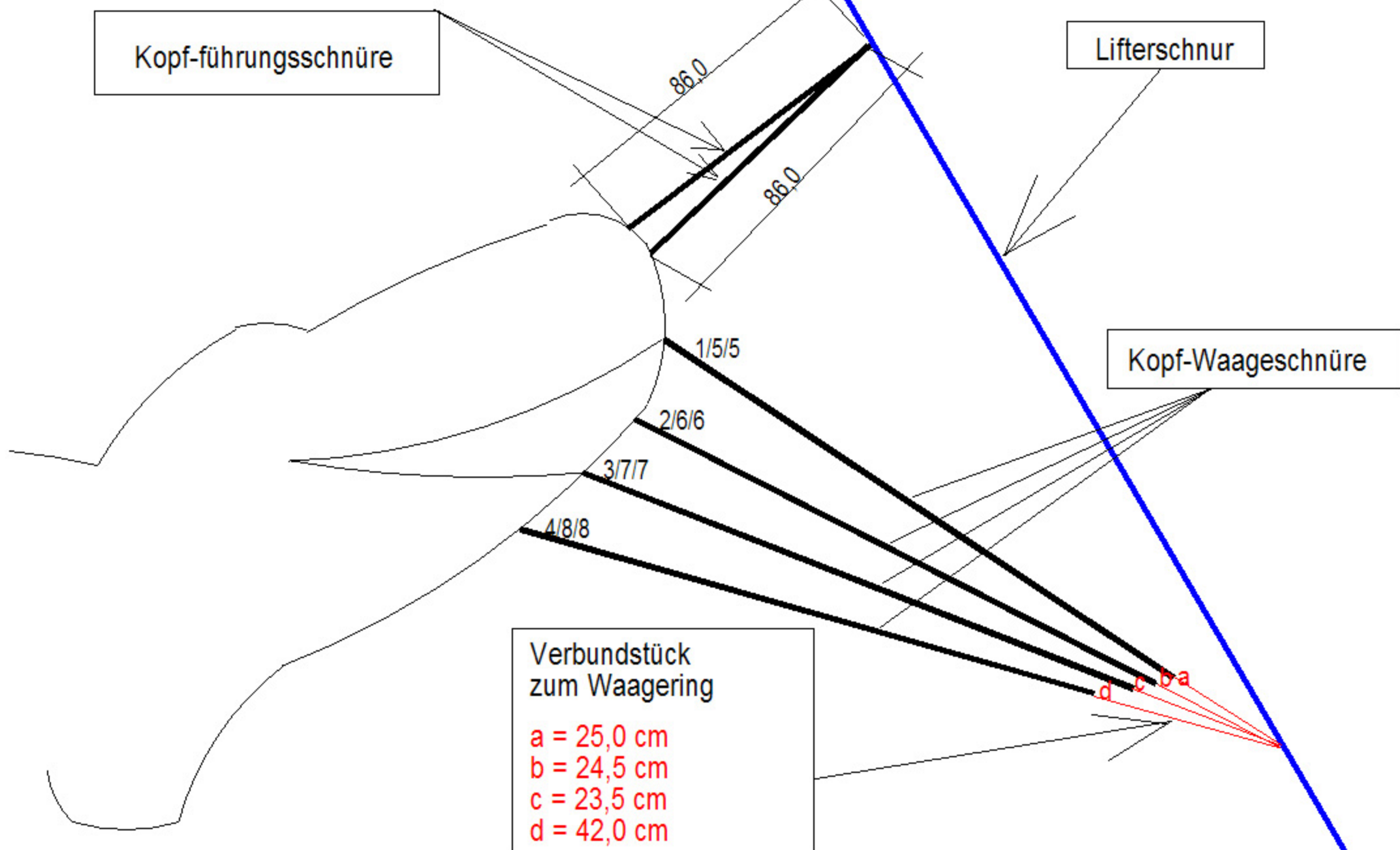


- 1 = 245.0 cm
- 2 = 242.0 cm
- 3 = 248.5 cm
- 4 = 257.0 cm
- 5 = 243.5 cm
- 6 = 244.0 cm
- 7 = 255.5 cm
- 8 = 263.5 cm

- - - = aufgenähte Schnüre
- - - = Maul-linie
- = Waagepunkt



Waage seite 3



Materialverbrauch

Bei einer Bahnbreite von 1.6m braucht man ca. 7.5m.

